

Maths

- Fractions - simplify, compare, order, add, subtract, multiply, divide
- Reasoning - explain and justify methods and strategies
- Problem solving - apply skills to solve a variety of problems.

Computing

- Create spreadsheets and use formulae to answer mathematical questions
- E-safety

RE

What will make our city/town/borough a more respectful place?

RSHE

Celebrating differences – accepting people's differences, solving problems, supporting each other.

British values – mutual respect

PE

Outdoor: Multi-sports

teaching and defending, agility and coordination, working as a team with good communication skills.

Indoor: Health related exercise

balance, agility, coordination, flexibility, strength.

Music

Advanced rhythms

(Kodaly music method)

Starting point

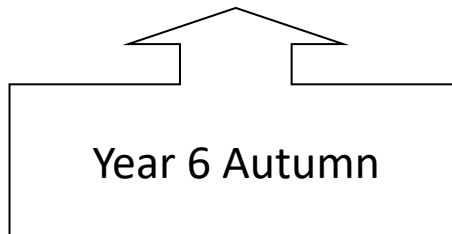
Through art, children to create their own imaginary land using a range of media.

Big Issue

How do world events effect our every day lives?

Text

The Lion, the Witch and the wardrobe by C.S. Lewis



English

Writing letters and narratives using different levels of formality.

Exploring how a character evolves throughout a text.

Science - living things and their habitats

- Exploring the origins of classification of living things.
- Investigate how microorganisms impact our everyday lives.

Design and Technology

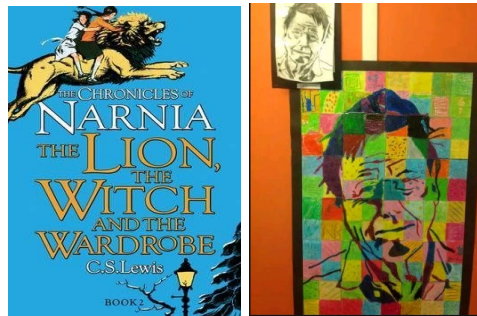
Food technology

Design and make own pizzas considering seasonality.

Art

To express feelings through collage

Elements of art: line, pattern, shape, space, value, form, texture



Ways in which you can support your child at home...

Below is a list of activities available on three different websites we subscribe to as a school, which your child is able to access through Wonde. These activities have been selected for your child to complete this half term, as they support learning in class. If you have difficulty accessing any of the sites, please contact your child's teacher.

LGFL

<http://sos.lgfl.org.uk/topic-menu.html?y=6>

Switched on Science

<http://mathsathome.lgfl.org.uk/>

Maths at home

<http://mitrw.lgfl.org.uk/index.html>

Maths in the real world

TT Rockstars

Children have access to times tables challenges to support fluency in multiplication and division facts.

<http://mitrw.lgfl.org.uk/index.html>

Purple Mash

Here are some suggestions that link with topics for this half term.

<https://www.purplemash.com/#tab/pm-home/topics/faith>

Places to visit

We are very fortunate to live in an area surrounded by many wonderful places to visit. To support your child's learning this half term, why not consider taking a trip Hainault Forest.

Reading

In Year 6 we expect children to read for **30 minutes** at least 6 times a week. It is important that children complete their reading record every time they read their school reading book.